

## Baseplate Mounted Bollards



Some solid surfaces have a shallow depth yet require a traffic deterrent. The 1-800-BOLLARDS Baseplate Mounted Bollards are easy to install since there is no time consuming core drilling or excavation. While these bollards are not tested for stopping vehicles, they help prevent minor accidents and damage to facilities.

Baseplate Mounted Bollards frequently help protect multi-level parking garages, warehouse doors, walls, corners, shelving, water and gas meters, and electrical boxes from forklifts and pallet jacks.

1-800-BOLLARDS Baseplate Mounted Bollards are available in three types of metal: 304 Stainless Steel, 316 Stainless Steel for harsher environments and powder-coated Carbon Steel. The Stainless Steel is polished to a #4 finish for long lasting durability and over 200 colors can powder-coat the Carbon Steel. Four distinct bollard cap styles add a nice touch and optional baseplate covers look good and protect the bolts.



### CAP STYLES



### FEATURES

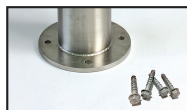
#### Steel Options

- **STAINLESS** – #4 Polished Finish  
Type 304 or Type 316 for harsher environments
- **CARBON**  
Powder-coated, 200+ Color Choices  
Square baseplate 1/2" thick with four 3/4" corner holes

#### Standard Height: 36"

- 4" Dia. & 6" Dia. also in 42"

Size	Baseplate	I.D.	O.D.	Wall Thickness	Schedule	Stainless Steel	Carbon Steel
3"x 36"	S.S. 7.56" Dia. / Carb. 8" x 8"	3"	3.5"	.120"	10	•	•
				.216"	40	•	•
4"x 36"	S.S. 8.69" Dia. / Carb. 8" x 8"	4"	4.5"	.120"	10	•	•
				.237"	40	•	•
4"x 42"	Carb. 8" x 8"	4"	4.5"	.237"	40	•	•
5"x 36"	S.S. 11.69" Dia. / Carb. 10" x 10"	5"	5.56"	.134"	10	•	•
				.258"	40	•	•
6"x 36"	S.S. 11.69" Dia. / Carb. 10" x 12"	6"	6.62"	.134"	10	•	•
				.280"	40	•	•
6"x 42"	Carb. 10" x 12"	6"	6.62"	.280"	40	•	•
8"x 36"	S.S. 15.25" Dia. / Carb. 12" x 12"	8"	8.62"	.148"	10	•	•
10"x 36"	S.S. 18.25" Dia. / Carb. 11" x 11"	10"	10.75"	.165"	10	•	•
				.365"	40	•	•
12"x 36"	S.S. 18.25" Dia. / Carb. 16" x 16"	12"	12.75"	.180"	10	•	•



#### AVAILABLE:

- Bolts

- Base Covers  
– Yellow Powder Coated  
– Stainless Steel

